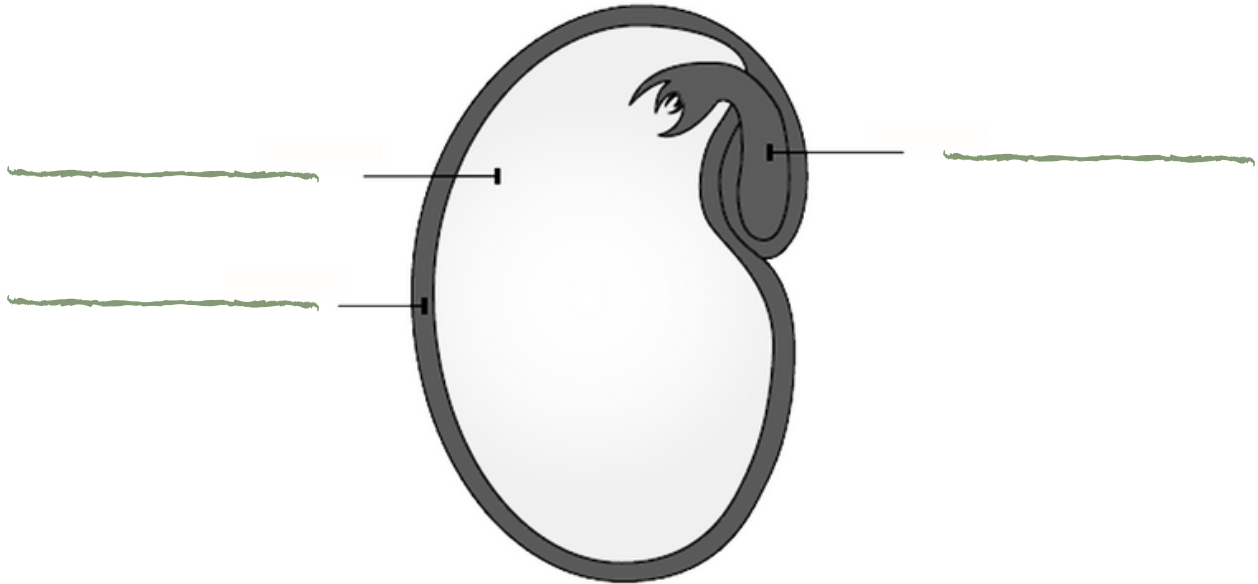


Parts of the Seed

Label the following diagram with the different parts of the seed.



Embryo: the baby plant inside the seed. Waits for the right conditions to grow.

Seed Coat: protects the seed.

Endosperm: the food for the baby plant.

DISSECT YOUR OWN SEEDS!

Leave seeds soaking in water for at least 12 hours. You can use dry bean seeds that you can get in the grocery store.

Afterwards, peel off the seed coat and gently open the seeds. Draw and label what you find in your seed!